

***Theme: Geospatial Technology:
Digital Impetus to Economic Transformation***



GEOSPATIAL FOR TOURISM

6 - 7 March 2012, Holiday Inn Melaka

GIS APPLICATION IN GEORGE TOWN WORLD HERITAGE SITE PENANG, MALAYSIA



Presented by:

MUHAMMAD HIJAS SAHARI

In collaboration with:



GEORGE TOWN WORLD HERITAGE SITE



MELAKA & GEORGE TOWN

Inscribed as World Heritage Site

State Party : Malaysia
Date of Inscription : 7.7.2008
Category : Cultural Heritage Site
Criteria : II, III & IV



Plate 154 VAN JOORS, Harbour Scene, Penang, c.1840. Oil 66.0 × 101.6 cm. (By courtesy of Mrs. S. K. Chan)

PenangViews1770-1860

HISTORIC CITIES OF THE STRAITS OF MALACCA

GEORGE TOWN



MELAKA



Sites	Total Number of Buildings		Total Buildings	Area (hectares)		Total Area (hectares)
	Core Zone	Buffer Zone		Core Zone	Buffer Zone	
Historic City of Melaka	930	948	1,878	38.62	134.03	172.65
Historic City of George Town	2,344	2,321	4,665	109.38	150.04	259.42
Total	3,274	3,269	6,543	148.00	284.07	432.07

AERIAL VIEWS OF GTWHS



Year 1950's



Present

JUSTIFICATION FOR INSCRIPTION

Criteria (ii) : Exhibit an important interchange of human values, over a span of time or within a cultural area of the world, on developments in architecture or technology, monumental arts, town-planning or landscape design.

OUTSTANDING UNIVERSAL VALUE

“The Historic Cities of the Straits of Malacca : Melaka and George Town” represent exceptional examples of multi-cultural trading towns in East and Southeast Asia, forged from the mercantile and civilization exchanges of Malay, Chinese, Indian and European cultures.



JUSTIFICATION FOR INSCRIPTION

Criteria (iii): Bear a unique or at least exceptional testimony to a cultural tradition or to a civilization which is living or which has disappeared.

OUTSTANDING UNIVERSAL VALUE

“The Historic Cities of the Straits of Malacca : Melaka and George Town” are living testimony to the multi-cultural heritage and tradition of Asia, where the greatest religions, and cultures met. The coexistence of distinct faiths - both tangible and intangible - in particular the different religious buildings, is a testament to the religious pluralism of Asia.



COMMUNITY & CULTURE



TRADITIONAL TRADES & CRAFTS



JUSTIFICATION FOR INSCRIPTION

Criteria (iv): be an outstanding example of a type of building, architectural or technological ensemble, or landscape which illustrates (a) significant stage(s) in human history.

OUTSTANDING UNIVERSAL VALUE

“The Historic Cities of the Straits of Malacca : Melaka and George Town” reflect the coming together of cultural elements from elsewhere in the Malay Archipelago and from India and China with those of Europe to create a unique architecture, culture and townscape without parallel anywhere in the East and South East Asia. In particular a range and exceptional architecture of shophouses and townhouses



MANAGING GEORGE TOWN WORLD HERITAGE SITE



**116 & 118, LEBUH ACHEH, 10200 GEORGE TOWN
PENANG, MALAYSIA**

GEORGE TOWN WORLD HERITAGE INCORPORATED



VISION

Convergence of an intelligent and sustainable heritage city that belongs to Penang, Malaysia and all humanity

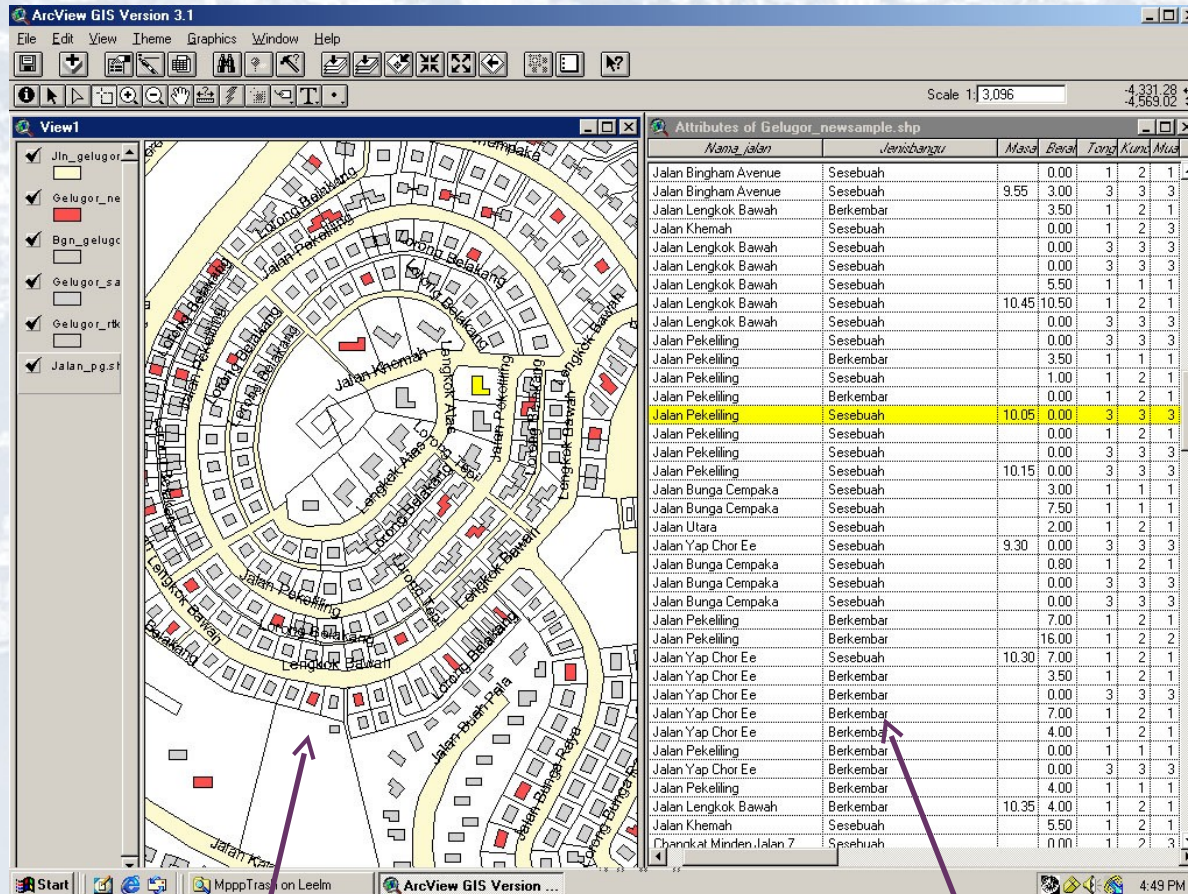
THE NEED FOR GIS

Safeguarding Outstanding Universal Value's of George Town World Heritage Site.

Integrate existing applications in other department that can be access by public, stakeholders, professionals, private and all government agencies.

As a helping hand for GTWHI in collecting and managing old and current data (time stamp) with more efficient planning, development, monitoring and conservation works in George Town World Heritage Site.

THE ESSENCE OF A GIS

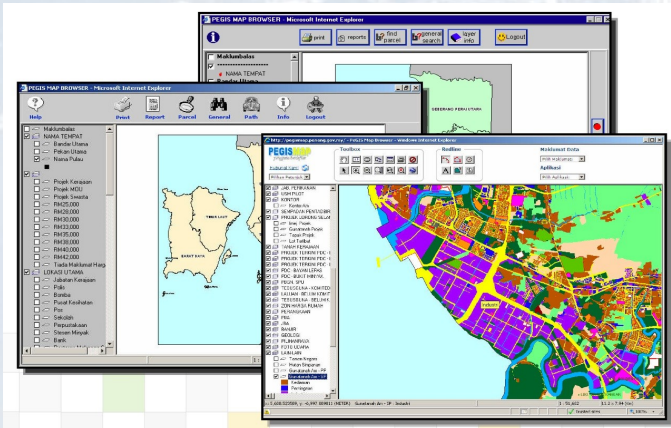


Spatial Data
- the map

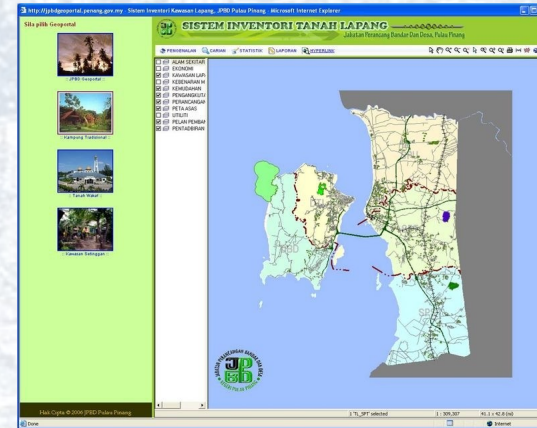
Attribute Data
- text

GIS IN PENANG

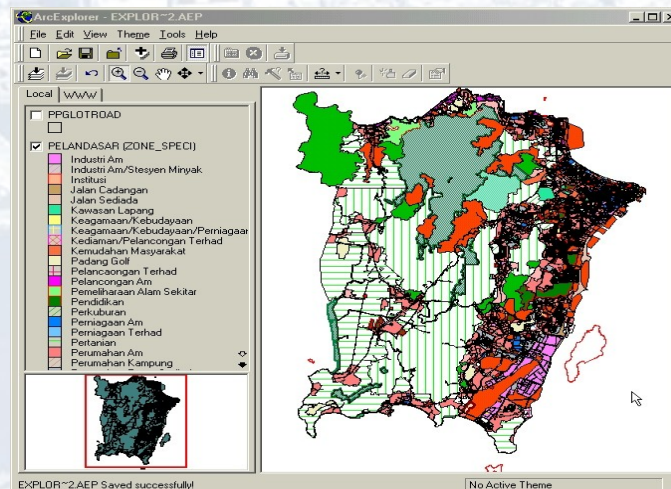
Where are we now?



PEGIS – started 1992



JPBD Penang geoportal



JPP MPPP portal

GIS AS A TOOL

- **Upload & update data in the course of day-to-day work**
 - **Should lighten workload; not add more work**
- **Publish data & reports**
 - **Accessible from anywhere in the World**
- **Facilitate public/stakeholder involvement in protecting our World Heritage Site**

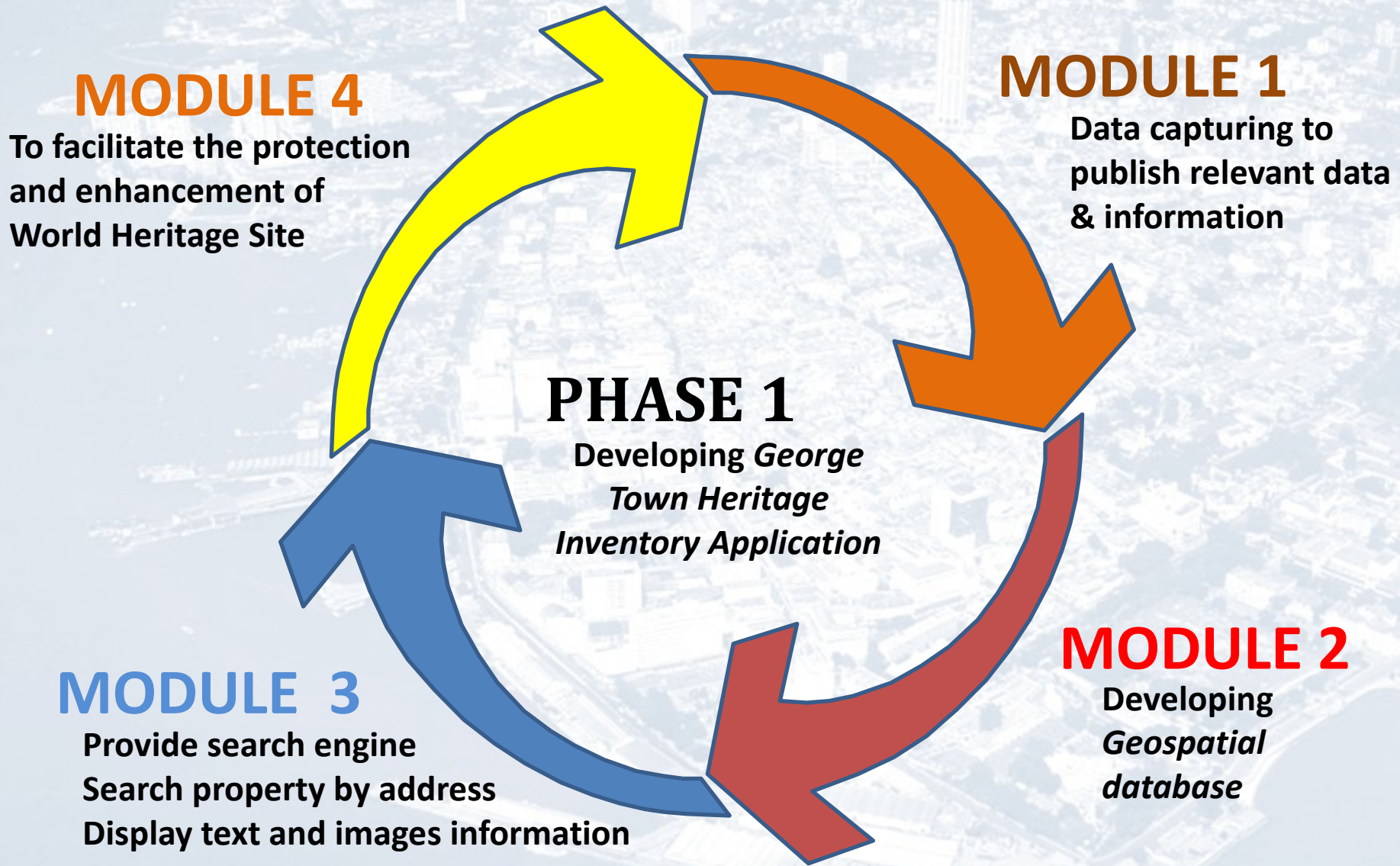
We already have the ...

- **Technology**
- **Data**
- **Expertise**

NOW, we need take it *one step forward...*

PHASE 1 MODULE

Complete with almost zero funding



GEORGE TOWN HERITAGE INVENTORY

George Town Heritage Inventory e-Map - Windows Internet Explorer

http://pegismap.penang.gov.my/warisan/index_main.php

GEORGE TOWN HERITAGE INVENTORY

PENGANTARAN MAKLUMAT KEMASKINI

WARISAN

LEGEND

- KEMUDAHAN AWAM
- PELANCONGAN
- PENGANGKUTAN
- KEBENARAN MERANCANG
- LOT
- HIDROGRAFI
- PENTADBIRAN
- PELESENAN
- LANDUSE & POPULATION SURF
- WARISAN
 - No. Bgn
 - Nama Bgn
 - Garisan Tapak Bangunan
 - Bgn Warisan (Building Style)
 - Bgn Warisan (Category)
 - Bangunan Warisan
 - Sempadan Zon Teras
 - Sempadan Zon Penampan
 - KellyMap-SD18TB4-k170 (2)
 - KellyMap-SD18TB4-k170
 - KellyMap-SD21TB2-k146
 - KellyMap-SD22TB1-k151
 - Zon Penampan
 - Zon Teras
 - Zon Warisan
 - Zon Teras
 - Zon Penampan
- GUNATANAH
- RSN

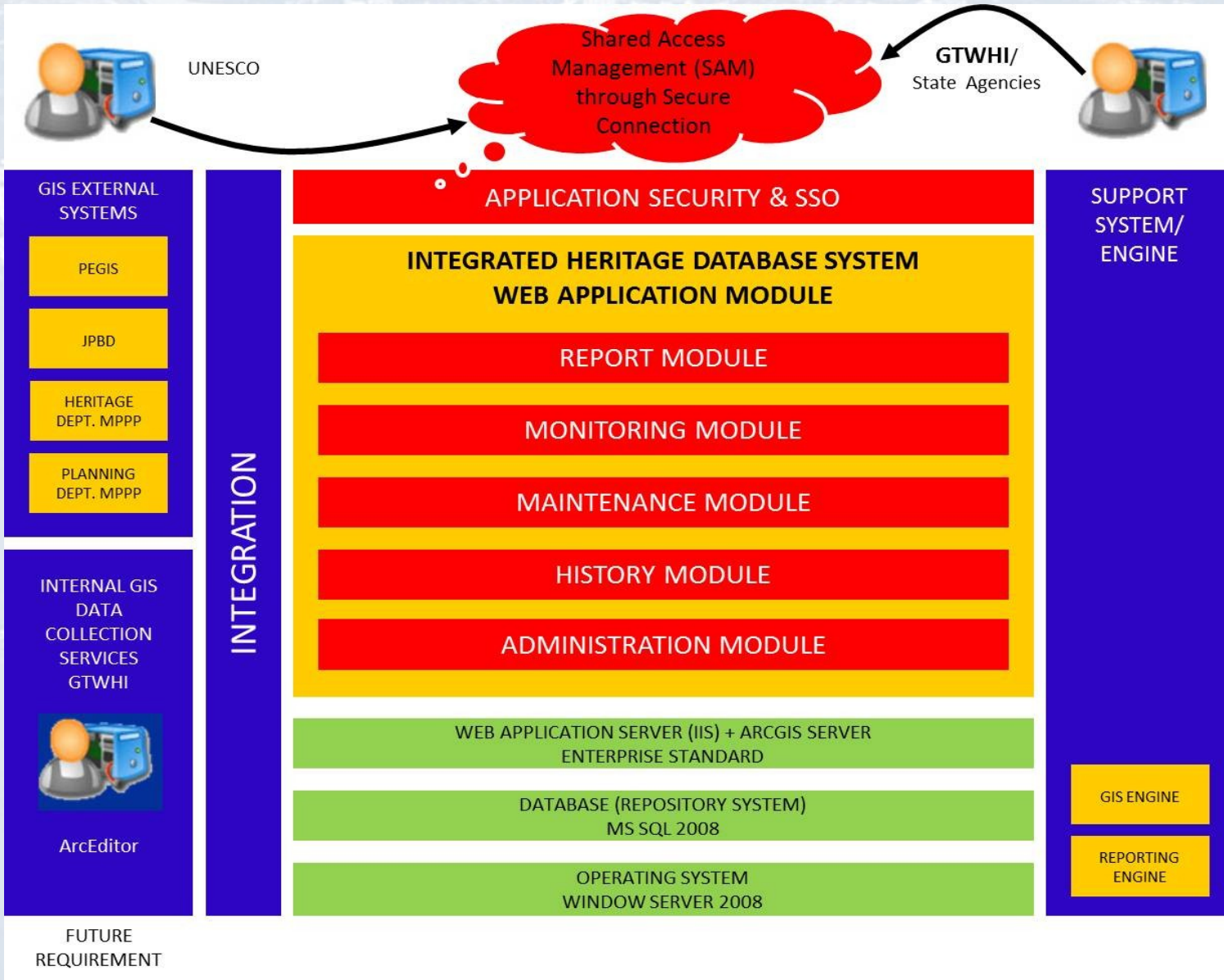
Pulau Pinang : 1 : 15,278 2.16 x 1.29 (mi)

Done Internet | Protected Mode: On 100%

House No.	118
Building Name	
Street Name	Lebuh Aceh
Lot No.	549
Town Section	18
Category	Csv2
Building Style	early straits eclectic
Ownership	kerajaan
Height	2-shse
Permohonan	
Building Plan	

Website - <http://pegismap.penang.gov.my/warisan/?/>

PHASE 2 MODULE



POTENTIAL PARTNERS

by leveraging multi-agency collaboration

- **George Town World Heritage Inc.**
- **PEGIS**
- **JPBD Penang**
- **Heritage Department, MPPP**
- **Building Department, MPPP**
- **Engineering, MPPP**
- **Licensing, MPPP**
- **Enforcement, MPPP**
- **Valuation Department, MPPP**
- **State Valuation Department (transaction prices)**
- **Land Office (ownership)**
- **JUPEM (digital cadastral)**
- **Police (crime statistics; security cameras)**
- **Tourism**
- **ThinkCity Sdn Bhd**
- **Others (PAM, MIP, IEM, REHDA?)**

THANK YOU

George Town World Heritage Inc.

□ 116 & 118, Lebuh Aceh, 10200 Penang, Malaysia

) 604 261 6606 / 263 7595

+ 604 261 6605

info@gtwhi.com.my

 www.gtwhi.com.my

